

---

Multi-axis Brushless/Brush Servo Amplifier

# AMP-19520/40

Rev. 1.0d

By Galil Motion Control, Inc.

*Galil Motion Control, Inc.  
270 Technology Way  
Rocklin, California 95765  
Phone: (916) 626-0101  
Fax: (916) 626-0102  
Internet Address: [support@galilmc.com](mailto:support@galilmc.com)  
URL: [www.galilmc.com](http://www.galilmc.com)*

*Rev 01/10*

**THIS PAGE LEFT BLANK INTENTIONALLY**

## Using This Manual

This user manual provides information for proper operation of the AMP-19520 and AMP-19540 multi-axis amplifiers. The AMP-19520/40 has been designed to work with both brushless and brush-type servo motors and installation will vary depending upon which type of motor is used.

Although the axes are labeled X, Y, Z, and W on the AMP-19520/40, note the following axis naming conventions:

<b>Total Controller Axes</b>	<b>Amplifier(s) Used</b>	<b>Controller Axis Names (per Galil software)</b>	<b>Amplifier Axis Names (per AMP-19520/40 silkscreen)</b>
1	AMP-19520	A	X
2	AMP-19520	A, B	X, Y
3	AMP-19540	A, B, C	X, Y, Z
4	AMP-19540	A, B, C, D	X, Y, Z, W
5	AMP-19540 and AMP-19520	A, B, C, D, E	X, Y, Z, W, X
6	AMP-19540 and AMP-19520	A, B, C, D, E, F	X, Y, Z, W, X, Y
7	Two AMP-19540s	A, B, C, D, E, F, G	X, Y, Z, W, X, Y, Z
8	Two AMP-19540s	A, B, C, D, E, F, G, H	X, Y, Z, W, X, Y, Z, W

**WARNING: Machinery in motion can be dangerous! It is the responsibility of the user to design effective error handling and safety protection as part of the machine. Galil shall not be liable or responsible for any incidental or consequential damages.**

# Contents

INTRODUCTION .....	5
ELECTRICAL SPECIFICATIONS .....	5
HEAT TRANSFER .....	5
MATING CONNECTORS .....	6
SETUP .....	8
<i>Amplifier Setup</i> .....	8
<i>Brushless Motor Setup</i> .....	9
<i>Brush Motor Setup</i> .....	9
JUMPERS .....	10
<i>Shunt Regulator (90V, 64V, 33V)</i> .....	10
<i>Amplifier Error Monitoring</i> .....	10
OPT .....	10
ELO .....	10
EFGH.....	10
7_IN .....	10
ABORT .....	10
CHOP.....	10
<i>Amplifier Gains</i> .....	10
AG2 .....	11
AG0 .....	11
AU1 .....	11
<i>Optoisolation Power</i> .....	11
EROUT .....	11
INCOM.....	11
EXT RESET .....	11
LSCOM.....	11
<i>Analog Ground</i> .....	11
GND/AG.....	11
PGM.....	11
<i>External Amplifiers</i> .....	12
MCM .....	12
AEN .....	12
PWM.....	12
SGN .....	12
INDICATOR LIGHTS AND ERRORS.....	12
<i>POWER (and Under-Voltage)</i> .....	12
<i>OVERCURRENT</i> .....	12
<i>OVERVOLTAGE</i> .....	12
<i>OVERTEMP</i> .....	13
<i>ERROR</i> .....	13
PINOUT .....	14

---

## Introduction

The AMP-19540 (four-axis) and AMP-19520 (two-axis) are multi-axis brush/brushless amplifiers that are capable of handling 500 watts of continuous power per axis. The amplifier accepts 18-80 VDC and includes breakout for all controller I/O, including encoders, Hall-effect switches, digital inputs, digital outputs, and analog inputs (Optima controllers only). The AMP-19520/19540 Brushless drive module can be connected to any of the following Galil controllers via the 100-pin high density connector:

Optima Series: DMC-1200, 13x8, 1600, 1700, 1800, 2000, 2100, 2200  
Econo Series: DMC-18x2, 21x2

Please use the AMP-20520/40 instead with the DMC-21x3.

---

## Electrical Specifications

The AMP-19520/40 is a brush/brushless trans-conductance PWM amplifier. The amplifier operates in torque mode and will output a motor current proportional to the command signal input.

Input Voltage:	18-80 VDC
Continuous Current:	7 amps
Peak Current	10 amps
Amplifier Gain	0.4, 0.7, or 1.0 A/V (jumper adjustable)
Switching Frequency	60 kHz (up to 175 kHz available--contact Galil)
Minimum Load Inductance	0.5 mH (low inductance option available)
Commutation Angle	120° (60° option available)

---

## Heat Transfer

If all AMP-19520/40 axes run at less than 3 A, thermal cooling is usually not required. For axes running greater than 3 A, it is up to the user to make sure that heat is adequately transferred out of the amplifier. If the amplifier is not properly cooled, it may reach 110 °C and the amplifier will shut down. All electrical components inside the amplifier that generate appreciable heat are in thermal contact with the metal back plate, so consideration should be taken to mount the amplifier to a thermally conductive surface (e.g. metal), preferably with thermal grease.



Figure 1. AMP-19540

## Mating Connectors

	Connector	Terminal Pins
POWER (8 pin)	<a href="#">AMP: 770579-1</a>	<a href="#">AMP: 171639-1</a>
MX, MY, MZ, MW (4 pin)	<a href="#">AMP: 172167-1</a>	<a href="#">AMP: 171639-1</a>

# Layout and Dimensions

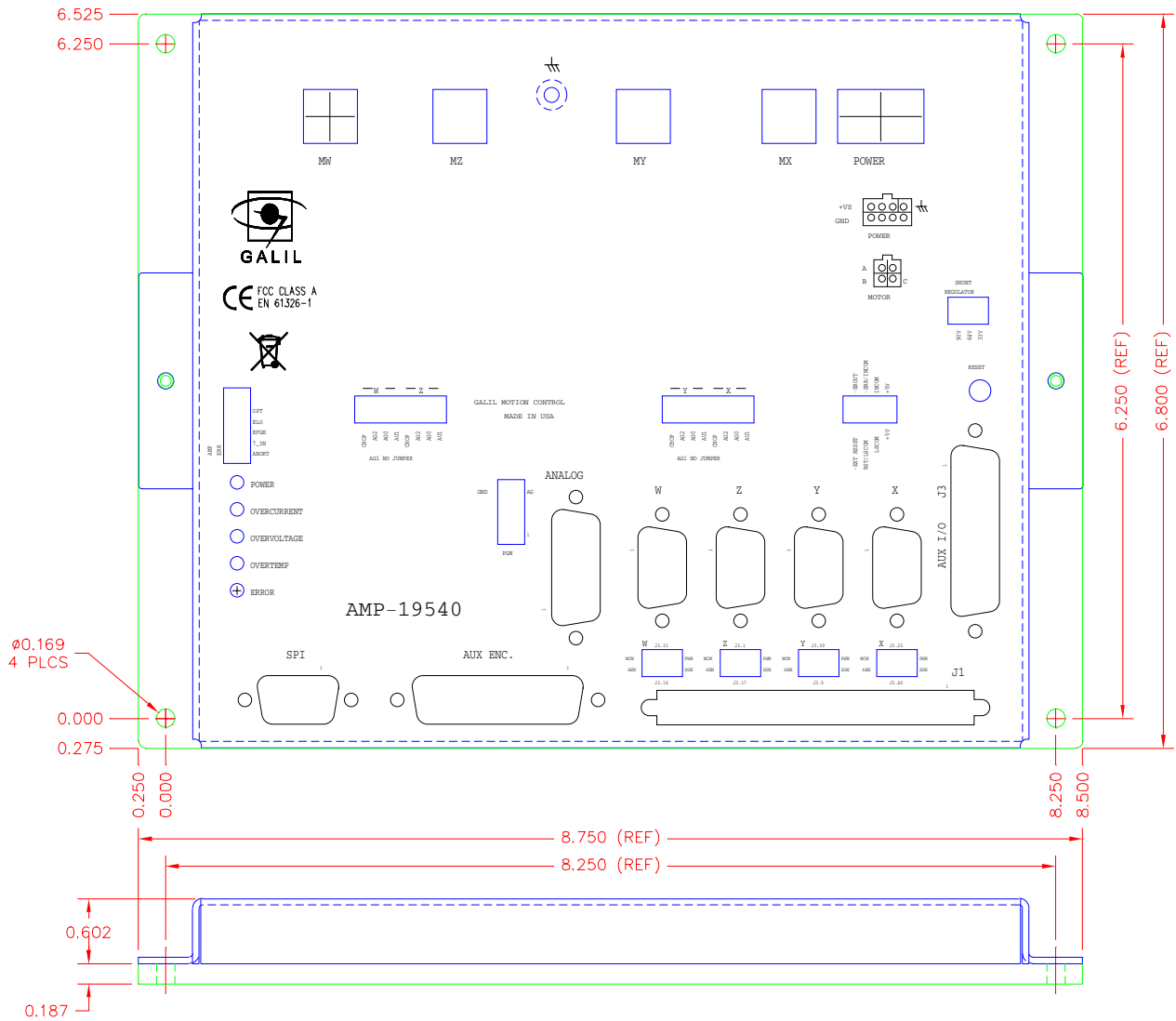


Figure 2. AMP-19520/40 Dimensions

Overall Dimensions: 8.75" x 6.80"

# Setup

Connect an unregulated DC power supply (18-80 V) to the POWER connector. Before applying drive power for the first time, take appropriate safety precautions: set a small error limit (ER \*= 1000), set Off on Error for all axes (OE \*= 1), and set a low torque limit (TK \*= 2; TL \*= 2).

## Amplifier Setup

Select the amplifier gain that is appropriate for the motor. The amplifier gain can be set to 0.4 A/V (AG0 jumper), 0.7 A/V (no AG jumper), and 1.0 A/V (AG2 jumper). This is the only jumper setting required to begin turning a motor; however, more jumper settings may be required to configure the optional shunt regulator, amplifier error monitoring, optoisolation power, and external amplifiers (see next section, Jumpers).

Peak and continuous torque limits can be set through TK and TL respectively. The TK and TL values are entered in volts on an axis-by-axis basis. The peak limit sets the maximum voltage that will be output from the controller to the amplifier. The continuous current sets what the maximum average current is over a quarter second interval. The following figure captured with WSDK shows the continuous and peak operation. The continuous limit was 2 V and the peak limit was 10 V (if the gain is set to 0.7 A/V, a torque limit of 2 causes the amplifier to never exceed 1.4 A on the specified axis).

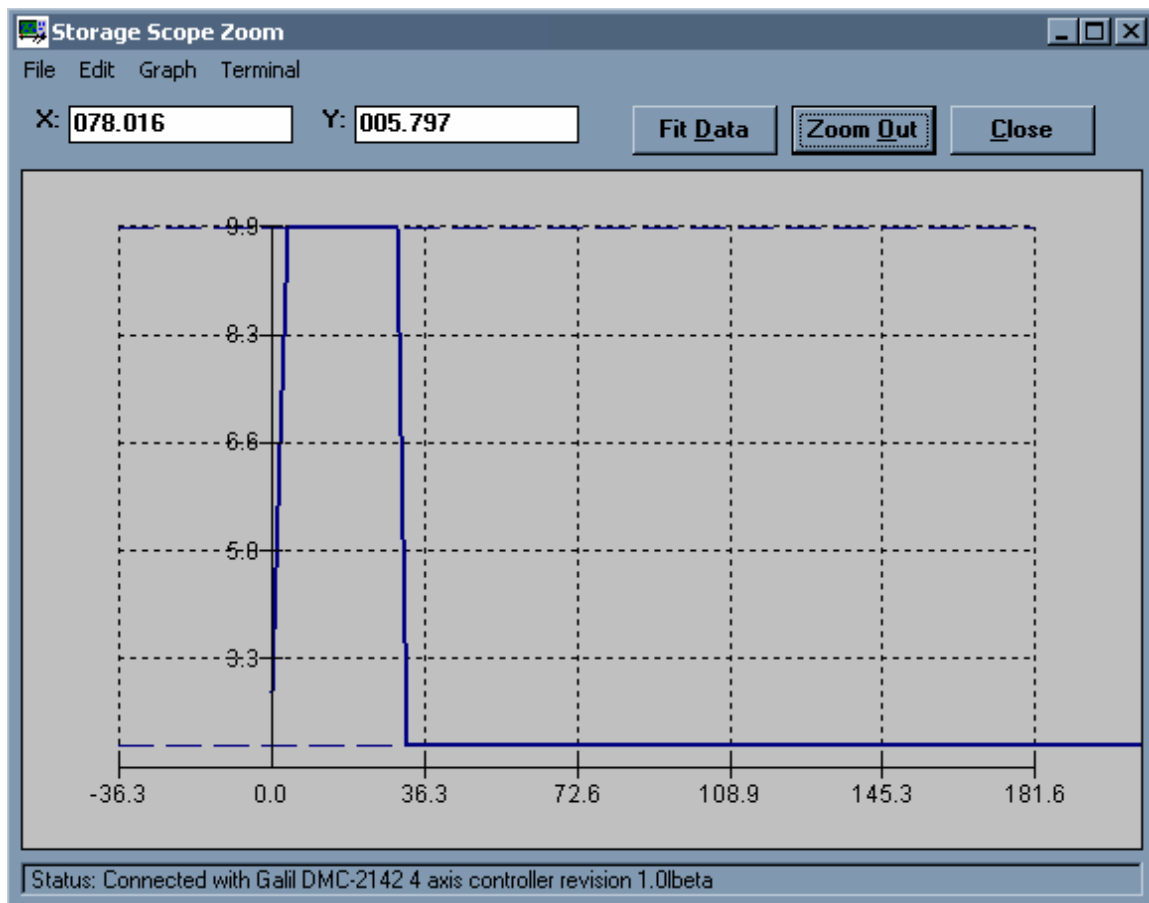


Figure 3. Peak and Continuous Current Operation



## ***Brushless Motor Setup***

To configure an axis for brushless motor operation, connect the encoders and Hall sensors (15-pin high density X, Y, Z, or W), home switches, and limit switches (AUX I/O J3). The AMP-19520/40 can normally only be connected to a brushless motor with 120 degree Hall commutation. 60 degree Hall commutation is an option and can be specified by ordering AMP-19540-COM60.

Next, connect the three motor power leads to the phase A, B, and C connections for the axis (MX, MY, MZ, or MW). The motor wiring must correspond to the Hall wiring, so if the motor manufacturer indicates how to do this, simply connect the power leads as specified. Otherwise, you will need to try up to six motor power lead combinations (keeping the hall sensor wiring fixed) until smooth motion results. Three of the combinations result in a stall condition (no torque), two result in jerky motion in one direction but smooth in the other, and the last (correct) combination results in smooth movement in both directions. The following table will help you connect all six combinations:

Table 1. Aid to connect all six motor power lead combinations

<b>Phase A</b>	<b>Phase B</b>	<b>Phase C</b>	<b>Behavior</b>
Power Lead 1	Power Lead 2	Power Lead 3	
Power Lead 1	Power Lead 3	Power Lead 2	
Power Lead 2	Power Lead 3	Power Lead 1	
Power Lead 2	Power Lead 1	Power Lead 3	
Power Lead 3	Power Lead 1	Power Lead 2	
Power Lead 3	Power Lead 2	Power Lead 1	

Once the motor is wired correctly, the controller is ready to perform closed-loop motion.

## ***Brush Motor Setup***

To configure an axis for brush motor operation, connect the two motor leads to the Phase A and Phase B connections for the axis (MX, MY, MZ, MW). Leave the C Phase disconnected. Connect the encoders (15-pin high density X, Y, Z, W), home switches, and limit switches (AUX I/O J3). The amplifier has no need for the Hall inputs when operating brush motors.

---

# Jumpers

## ***Shunt Regulator (90V, 64V, 33V)***

The AMP-19520/40 has an OPTIONAL internal shunt regulator (for example, order AMP-19540-SR). A shunt regulator is a power resistor and switch connected across the power supply used to dissipate energy fed back to the amplifier from the motor. This keeps the power supply voltage from exceeding hazardous levels.

The shunt regulator is unused when no jumper is installed (an OVERVOLTAGE error condition will occur if the supply voltage exceeds 94 V). Install a single jumper on the desired voltage threshold (90V, 64V, or 33V) to use the shunt regulator. The switch will close when the power supply's capacitor exceeds the voltage threshold. The voltage threshold chosen should be the one just higher than the nominal supply voltage (e.g. use the 33 V jumper when using a 24 V supply).

For more information see [Application Note 5448: Shunt Regulator Operation](#)

## ***Amplifier Error Monitoring***

When an amplifier error occurs (UNDERVOLTAGE, OVERCURRENT, OVERVOLTAGE, or OVERTEMP), the AMP ERR digital output is brought low. Insert either the 7\_IN or ABORT jumper to notify the controller of these conditions.

### ***OPT***

Reserved

### ***ELO***

ELO (Emergency Lock Out) is a jumper setting on the AMP-195x0 which configures the amplifier's behavior when the abort line goes low. With the jumper absent (default), the behavior of the motors is subject to the OE command. If the jumper is installed, the amplifiers will be immediately shut down, leaving the axes in a free-spin state. Having the ELO jumper installed is similar to OE1, except that the amplifiers are disabled in hardware rather than firmware. WHEN ELO IS INSTALLED, OE SHOULD BE SET TO 1. To recover, issue MO; SH. When ELO is active, the overcurrent and overvoltage lights will turn on.

### ***EFGH***

reserved

### ***7\_IN***

Install this jumper to tie the amplifier's AMP ERR digital output to digital input 7 on the controller. This jumper allows the controller to handle an amplifier error condition for example by issuing the ST command from #ININT (see II in the command reference). INCOM MUST BE POWERED WITH OPTIMA CONTROLLERS

### ***ABORT***

Install this jumper to tie the amplifier's AMP ERR digital output to the controller's Abort digital input. When the Abort input is brought low, the controller will stop program execution and bring all axes to an instantaneous stop (OE0) or allow the motors to coast (OE1). INCOM MUST BE POWERED WITH OPTIMA CONTROLLERS

### ***CHOP***

Install for chopper mode (for low inductance motors), otherwise the amplifier operates in inverter mode (Rev D or newer).

## ***Amplifier Gains***

If AG2 and AG0 are not installed, the amplifier gain on that axis is 0.7 A/V (medium).

## **AG2**

Sets the amplifier gain on that axis to 1.0 A/V (high)

## **AG0**

Sets the amplifier gain on that axis to 0.4 A/V (low)

## **AU1**

No jumper for normal current loop gain. Jumper for high current loop gain.

The normal current loop gain should be chosen for low inductance motors (less than 5 mH with a 24V supply or 10 mH with a 48 V supply).

## ***Optoisolation Power***

These jumpers set the power source for the controller's digital input optoisolators. If an external supply is used for the general purpose inputs, the Error digital output is unavailable. If an external supply is used for the limit and home switch inputs, the Reset digital input is unavailable.

NOTE: If the AMP-19540 will be used with a controller that has optoisolation, such as an Optima or Accelera series product, and the system requires an isolated supply greater than 5V, please consult Galil.

## **EROUT**

Jumper EROUT to ERR/INCOM to bring out the controller's error digital output to AUX I/O J3 pin 30.

## **INCOM**

Jumper INCOM to ERR/INCOM to bring the controller's digital input common to AUX I/O J3 pin 30 (Optima series only). An external DC power supply between 5 and 24 V must be connected to this pin to use the controller's general purpose digital inputs and Abort input.

Jumper INCOM to +5V to tie the controller's digital input common to the controller's 5 V power supply (Optima series only). This bypasses the optoisolation for the digital inputs.

## **EXT RESET**

Jumper EXT RESET to RST/LSCOM to bring out the controller's Reset digital input to AUX I/O J3 pin 44.

## **LSCOM**

Jumper LSCOM to RST/LSCOM to bring the controller's limit/home switch common to AUX I/O J3 pin 44 (Optima series only). An external DC power supply between 5 and 24 V must be connected to this pin to use the controller's limit and home switches.

Jumper LSCOM to +5V to tie the controller's limit/home switch common to the controller's 5 V power supply (Optima series only). This bypasses the optoisolation for the limit and home switch inputs).

## ***Analog Ground***

### **GND/AG**

Insert jumper when using a DMC-2000, 2100, or 2200 controller. This ties the analog (+/-12 V) ground to digital (5 V) ground.

### **PGM**

reserved

## ***External Amplifiers***

These jumpers must be set if external amplifiers are connected to the controller through the AMP-19520/40.

Install MCM and AEN if the axis drives an external servo amplifier (other than the AMP-19520/40). That axis's PWM and SGN digital outputs will be inaccessible.

Install PWM and SGN if the axis drives an external stepper amplifier (or external PWM-input servo amplifier). That axis's MCM and AEN outputs will be inaccessible. The SM jumper(s) must be installed on the controller.

### ***MCM***

Jumper MCM to J3.x to bring that axis's Motor Command Analog Output to the J3 AUX I/O J3 connector at pin x.

### ***AEN***

Jumper AEN to J3.x to bring that axis's motor Amplifier Enable Digital Output to the J3 AUX I/O J3 connector at pin x.

### ***PWM***

Jumper PWM to J3.x to bring that axis's Pulse Width Modulation Digital Output to the J3 AUX I/O J3 connector at pin x.

### ***SGN***

Jumper SGN to J3.x to bring that axis's Sign Digital Output to the J3 AUX I/O J3 connector at pin x.

---

## **Indicator Lights and Errors**

The amplifier is protected against under-voltage, over-current, over-voltage, and over-temperature conditions, which are indicated by LEDs. It responds to these conditions by disabling and setting its AMP ERR digital output low. The controller can be informed of amplifier errors via AMP ERR by installing the 7\_IN or ABORT jumpers.

### ***POWER (and Under-Voltage)***

Indicates whether amplifier power (18-80 VDC) AND board-level power (5, +/-12 VDC) is applied (both the POWER connector and 100 pin J1 connector must be connected for this indicator to light).

If the power supply voltage drops below 12 V (Under-Voltage), the amplifier disables and the POWER light will turn off. The amplifier will automatically re-enable once the supply rises above the 12 V.

### ***OVERCURRENT***

If the current on any axis exceeds 10 A, the amplifier will disable. The amplifier will remain disabled until the controller sets all Amp Enable lines low and subsequently sets at least one high (issue MO; SH to reset). This fault indicates a system-level problem and is usually due to a short across the motor leads or a short from a motor lead to ground.

### ***OVERVOLTAGE***

Indicates that the amplifier power (18-80 VDC) applied to the POWER connector has risen above 94 V due to regenerative energy fed back from the motor. The amplifier will short the motor leads (regenerative braking) and will automatically return to normal operation when the supply drops below 89 V.

## ***OVERTEMP***

If the heat sink temperature rises above 110 °C the amplifier disables and will automatically re-enable when the temperature drops below 110°C.

## ***ERROR***

Reflects the status of the controller's (NOT the amplifier's) error digital output. This indicator lights under the following conditions:

- (1) when the RESET button on the AMP-19520/40 is pushed (this toggles the controller's Reset digital input)
  - (2) momentarily lights when power is applied to the controller
  - (3) one or more of the controller's axes is not following well (TE exceeds ER)
  - (4) when a controller hardware failure occurs (e.g. 5 V supply out of tolerance, corrupted firmware...).
- 

**Note:** Do not “hot swap” the motor power connections. If the amp is enabled when the motor connector is connected or disconnected, damage to the amplifier can occur. Galil recommends powering the controller and amplifier down before changing the connector.

# Pinout

<b>POWER 8-pin AMP Mate-n-lock II</b>	
1	Earth
2	+VM (18 V–80 V)
3	+VM (18 V–80 V)
4	+VM (18 V–80 V)
5	Ground
6	Ground
7	Ground
8	Ground

<b>MX, MY, MZ, MW Motor Output 4-pin AMP Mate-n-lock II</b>	
1	Earth
2	A
3	C
4	B

<b>X, Y, Z, W 15-pin Hi-density Female D-sub</b>	
1	I+
2	B+
3	A+
4	AB+
5	Ground
6	I-
7	B-
8	A-
9	AA-
10	Hall A
11	AA+
12	AB-
13	Hall B
14	Hall C
15	5 V

<b>SPI 9-pin Female D-sub</b>	
1	Reserved

<b>ANALOG (Optima Controllers Only) 15-pin Male D-sub</b>	
1	Ground
2	Analog input 1
3	Analog input 3
4	Analog input 5
5	Analog input 7
6	Ground
7	-12 V
8	5 V
9	Ground
10	Analog input 2
11	Analog input 4
12	Analog input 6
13	Analog input 8
14	Ground
15	+12 V

<b>AUX ENC (connects to controller) 25-pin Male D-sub</b>	
1	5 V
2	AAX+
3	ABX+
4	AAY+
5	ABY+
6	5 V
7	AAZ+
8	ABZ+
9	AAW+
10	ABW+
11	Reserved
12	Reserved
13	Reserved
14	Ground
15	AAX-
16	ABX-
17	AAY-
18	ABY-
19	Ground
20	AAZ-
21	ABZ-
22	AAW-
23	ABW-
24	Reserved
25	Reserved

<b>AUX I/O 44-pin Hi-density Female D-sub</b>	
1	PWM/MCMTD Z
2	Output 6
3	Output 8
4	Output 5
5	Output 2
6	Abort*
7	Input 6
8	Latch Z/Input 3
9	SIGN/AEN Y
10	Encoder compare output
11	Reverse limit X
12	Reverse limit Y
13	Reverse limit Z
14	Reverse limit W
15	Forward limit W
16	SIGN/AEN W
17	SIGN/AEN Z
18	Output 7
19	Output 4
20	Output 1
21	Output 3
22	Input 7
23	Latch W/Input 4
24	Latch X/Input 1
25	PWM/MCMTD X
26	Home X
27	Home Y
28	Home Z
29	Home W
30	Error Output*/INCOM
31	PWM/MCMTD W
32	5 V
33	5 V
34	Ground
35	Ground
36	Input 8
37	Input 5
38	Latch Y/Input 2
39	PWM/MCMTD Y
40	SIGN/AEN X
41	Forward limit X
42	Forward limit Y
43	Forward limit Z
44	Reset*/LSCOM

**\*Active Low**